

TOOLS REQUIRED

- 1/2 Wrench
- 5/16 Wrench
- 5/32 Allen wrench
- 3/32 Allen wrench
- Needle Nose Pliers
- Screwdriver – Phillips or Slotted
- O-ring pick
- Drift pin – 3/32 diameter
- GTP-9656 – tool for installing piston seal

HANDLE / GUARD REMOVAL

- 1 – Remove the eight socket head cap screws from the handle / guard item 9, then slide the handle / guard off of the nozzle body item 4.

GROUNDING CABLE REMOVAL

- 1- Remove the grounding cable assembly item 21 from the piston guide assembly item 5. Inspect and replace if necessary.

FRONT COVER REMOVAL AND INSTALLATION

- 1- Remove the 4 cap screws item 26 and the front cover item 6 from body item 4. Remove the o-ring item 24 from the front cover.
- 2- Replace the new o-ring item 24 into the o-ring groove on the front cover item 6. Lightly apply petroleum jelly all around the o-ring. Then press the front cover into the nozzle body item 4. Secure front cover to the nozzle body with screws item 26, (4 places). NOTE: use blue loctite on item 26.

SWIVEL REMOVAL AND INSTALLATION

Reference Figure 9

- 1- Remove the 4 cap screws item 26, the swivel collar item 8, and the swivel ring item 3.
- 2- Remove the swivel item 7 by pulling outward. Remove the o-ring item 24, the wide Teflon strip item 12 and the swivel bushings item 54.
- 3- Place the new o-ring item 24 into the o-ring groove on swivel item 7. Then lightly apply petroleum jelly all around the o-ring. Lightly apply petroleum jelly to the inside back of the nozzle body. Install the new swivel bushings item 54 in place, then wrap the new Teflon strip item 12 around the swivel in the groove. Press swivel into nozzle body item 4 holding the Teflon strip in place. Then slide the new swivel ring item 3 and the swivel collar item 8 over the swivel and secure to the nozzle body with screws item 26, (4 places). NOTE: use blue loctite on item 26.

QUICK DISCONNECT OUTLET - REMOVAL AND INSTALLATION, DISASSEMBLY AND ASSEMBLY

Reference Figure 7

- 1 - Remove the spout item 19 or item 54 from the quick disconnect outlet item 5, then remove the strainer.
- 2 - Remove the 4 cap screws item 26 and the quick disconnect outlet item 5. Remove the o-ring item 23 from the quick disconnect outlet.
- 3 - To replace the spring inside the quick disconnect outlet item 5, pull out the sleeve release barrel and push down on the sleeve item 32 to expose the retaining ring item 33. Remove the retaining ring item 33. NOTE: there are 4 balls item 34 under the release sleeve item 32. When the sleeve is lifted up off of the outlet flange the balls will fall out. Slide the sleeve item 32 off of the quick disconnect outlet being careful not to drop the 4 balls item 34.
- 4 - Remove the spring item 35 from the quick disconnect outlet and replace with the new spring.
- 5 - To install the release sleeve item 32, balls item 34 and retaining ring item 33 reverse the procedure.
- 6 - Replace the new o-ring item 23 into o-ring groove on the quick disconnect outlet assembly item 5. Lightly apply petroleum jelly all around o-ring then press the assembly into the nozzle body item 4.
- 4 - Secure the assembly to the nozzle body with screws item 26 (4 places). NOTE: use blue loctite on item 26

PISTON GUIDE REMOVAL

Reference Figure 3

- 1- To prevent cocking of the piston guide carefully follow these instructions. Remove the trigger item 16 from the stem / poppet assembly item 18 by removing items 28 and 29, barrel screw and barrel.
- 2- Remove the 4 cap screws item 26 by alternating between loosening them bringing up the piston guide evenly until the piston guide is free. Note: the piston spring item 13 will be pushing up on the piston guide raising it as the screws are being loosened.
- 3- Remove the piston guide assembly from the body, turn the piston guide over and remove the stem / poppet and piston assembly by gently pulling down on the piston.

PISTON GUIDE O-RING REMOVAL & INSTALLATION

Reference Figure 5

- 1- Remove the o-ring item 31 from inside the piston guide by using an o-ring pick. Once the o-ring is out, clean the area and lightly apply petroleum jelly to the o-ring groove inside the piston guide and then replace the new o-ring item 31.

STEM / POPPET AND PISTON DISASSEMBLY

Reference Figure 2

- 1 - Remove the spring from the stem / poppet and piston assembly. Turn the assembly over and remove the cotter pin from the stem. Slide the stem / poppet assembly item 18 out of the piston item 2.

PISTON SEAL O-RING AND SEAL REMOVAL & INSTALLATION

Reference Figure 2

- 1 - Remove the piston o-ring item 51 from the piston item 48. Turn the piston over and remove the piston head item 49 using tool GTP-9656. Remove the piston seal item 50 and seal guide item 61. Remove the seal guide from the piston seal using care as to not distort it. Clean the piston. Install the seal guide item 61 into the new piston seal item 50. Place the piston seal with seal guide onto the piston and install the piston head item 49. Tighten the piston head as tight as possible using tool GTP-9656. Next install the new piston o-ring item 51.

STEM / POPPET O-RING AND SEAL REMOVAL & INSTALLATION

Reference Figure 6

- ___1- Using a press and the 3/32" diameter drift pin, press out the grooved pin item 47 and remove the poppet item 44 from the stem item 43.
- 2- Remove the o- ring item 46 from inside the poppet. Turn the poppet over and remove the stem seal item 45 with the o- ring pick. Clean the poppet and inspect for wear, replace if necessary.
- 3 - Next install the new o-ring item 46 by placing the o-ring inside of the poppet so it sits flat, lightly coat the bottom of the stem with petroleum jelly and slide the stem down into the poppet until the hole in the stem and the hole in the poppet align. Lightly press the grooved pin item 47 in until flush with poppet.
- 4- Install the new stem seal by pushing it into the groove under the poppet in a circular motion until the seal is fully seated. The seal must be flat when installed.

STEM / POPPET & PISTON ASSEMBLY

Reference Figure 2

- 1 - Place item 18 stem / poppet assembly into item 2 piston assembly. Turn over and install the new cotter pin item 22 thru the hole in the bottom of the stem. The cotter pin must be bent out in order to stay in place.
- 2 - Lightly coat the stem with petroleum jelly, install the new spring item 13 over the stem / poppet assembly so the spring rests in the groove on the top of the poppet.
Lightly apply petroleum jelly to the o-ring and surrounding area of item 2 piston assembly.

INSTALLING THE STEM / POPPET ASSEMBLY INTO THE PISTON GUIDE

Reference Figure 3

- 1 - Install the o-ring item 23 into o-ring groove on bottom of the piston guide item 1. Lightly apply petroleum jelly around o-ring.
- 2 - Slide the piston assembly with the stem /poppet assembly up into the piston guide assembly until the stem protrudes out of the top. Making sure the spring sits around the plug in the piston guide assembly. Holding it in place carefully place the assembly into the nozzle body item 4. When installed the piston guide assembly will be raised up. Install item 26 (4 places) do not tighten. After all 4 screws have been installed alternate tightening the screws, bringing down the piston guide assembly evenly until all four screws are secure. NOTE: use blue loctite on screw item 26. Watch that the o-ring does not fall out of the o-ring groove under the piston guide item 1.
- 3 - Next lower the trigger over the stem and secure with items 28 and 29 using red loctite. Check to see if the trigger moves freely up and down.

DASH-POT O-RING REMOVAL & INSTALLATION

Reference Figure 1

- 1 - Remove the air bleed cap item 11 from the piston guide assembly item 1. Unscrew the dash-pot air bleed plug and remove the o-ring. Clean and inspect the plug. Next install the new o-ring item 52 and then lightly apply petroleum jelly all around the o-ring.
- 2- Screw the dash-pot air bleed plug back into item 1 piston guide assembly until it bottoms out, then back off 2 ½ turns. Note: This is a general setting for the dash-pot. When fueling adjust the dash-pot as necessary to overcome line shock and closure rate. Next replace the air bleed cap.

SPOUT - O-RING REMOVAL & INSTALLATION

Reference Figure 4

- 1- Turn the nozzle over, pull out the sleeve release barrel item 56 and pull down on the release sleeve item 32 and remove the spout item 54 or item 19 from item 5 quick disconnect outlet.
- 2- Remove the o-ring item 17. Clean the area and inspect the spout. Install the new o-ring item 17 and lightly coat with petroleum jelly. Pull the sleeve release barrel item 56 out then pull down on the release sleeve item 32 and press the spout into item 5 quick disconnect outlet. Then release the sleeve and the barrel. Check to see that the spout is fully engaged by pulling out on the spout.

SLEEVE RELEASE BARREL SPRING REPLACEMENT

- 1- Remove the shoulder screw item 57 from the front of item 5 quick disconnect outlet. The barrel item 56 and spring item 58 will come off with the shoulder screw. Remove the old spring from inside the barrel and replace it with the new spring. Reverse procedure for installation. Note: use blue loctite on item 57 shoulder screw.

REPLACE THE HANDLE / GUARD

- 1- Slide item 9 handle / guard over item 4 nozzle body and attach with screws item 27 (8 places).
NOTE: use blue loctite on item 27. Note that the back of the handle / guard has an interlock design built in.

ATTACH GROUNDING CABLE ASSEMBLY

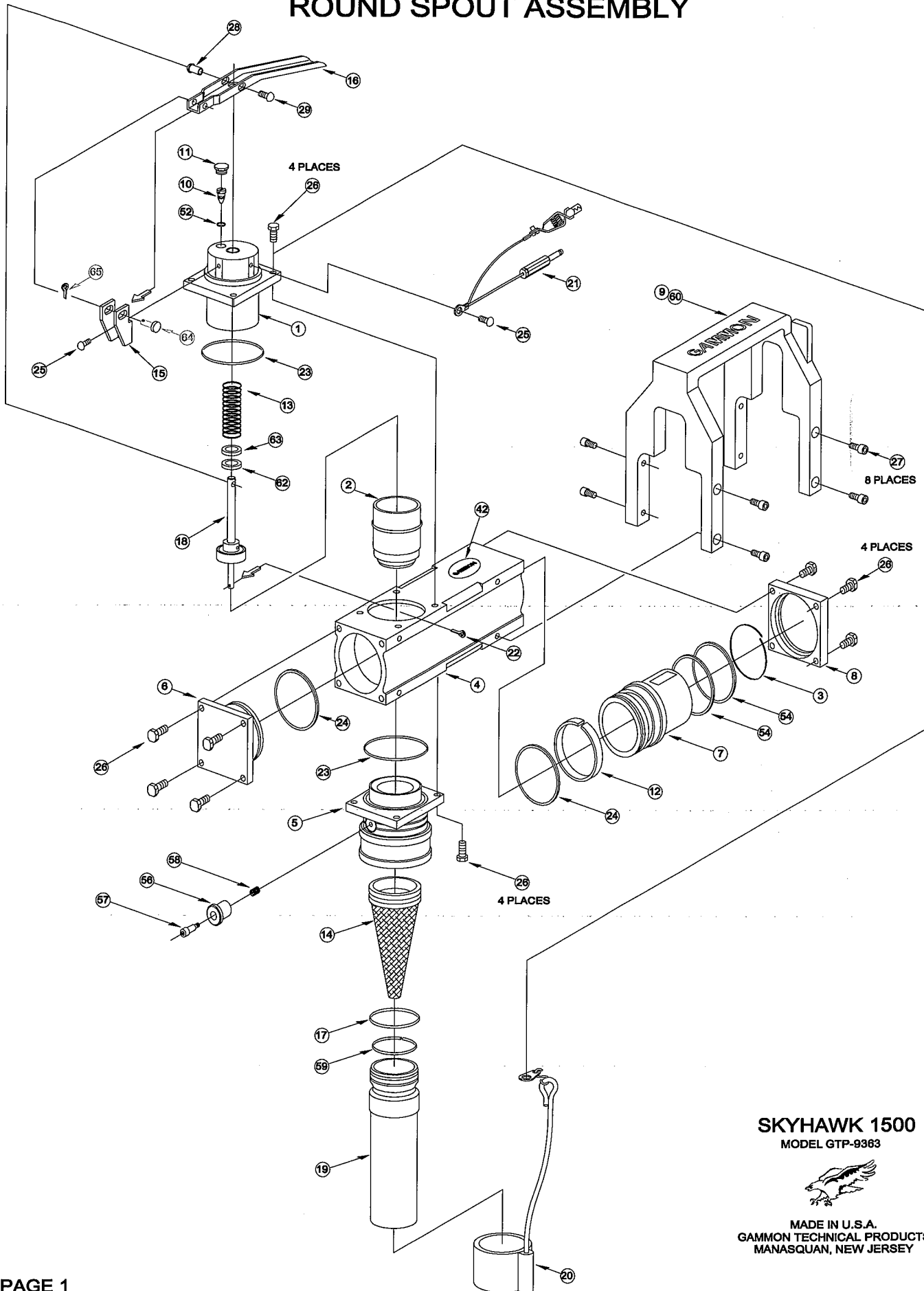
- 1 – Secure the grounding cable assembly item 21 to item 1 piston guide assembly using item 25.

TESTING PROCEEDURE

Note: the spout, handle / guard and the grounding cable assembly does not need to be installed to test the nozzle

- 1- Attach test fixture to inlet of swivel.
- 2- Submerge the nozzle assembly completely in water.
- 3- Slowly apply 80 P.S.I to nozzle and observe spout end for any leakage past main poppet.
- 4- Rotate swivel, observing for leaks during rotation.
- 5- Look for leaks at the stem below the trigger. Turn off the air supply and work the trigger several times. Return the trigger to the closed position and slowly apply 80 P.S.I. to nozzle and check stem below the trigger for leaks again.
- 6- Remove nozzle from test tank and dry.

MODEL GTP-9363-B ROUND SPOUT ASSEMBLY



SKYHAWK 1500
MODEL GTP-9363



MADE IN U.S.A.
GAMMON TECHNICAL PRODUCTS
MANASQUAN, NEW JERSEY

**MODEL GTP-9363
ROUND SPOUT ASSEMBLY }
PARTS LIST**

ITEM	QTY	PART No.	DESCRIPTION	MATERIAL
1	1	GTP-9363-35A	PISTON GUIDE ASSEMBLY	ALUM., BRASS
2	1	GTP-9363-36	PISTON ASSEMBLY	ALUM
3	1	GTP-9363-37	SWIVEL RING	S/S
4	1	GTP-9363-38	NOZZLE BODY	ALUM
5	1	GTP-9363-5	QUICK DISCONNECT OUTLET ASSEMBLY	ALUM
6	1	GTP-9363-6	FRONT COVER	ALUM
7	1	GTP-9363-7	SWIVEL - 1 1/2-11 1/2 NPTF THREADS	ALUM
8	1	GTP-9363-8	SWIVEL COLLAR	ALUM
9	1	GTP-9363-9	HANDLE / GUARD - BLACK	
10	1	GTP-9363-10	DASH-POT AIR BLEED PLUG - INCLUDES 007 O-RING	S/S
11	1	GTP-9363-11	AIR BLEED CAP	S/S
12	1	GTP-9363-12A	TEFLON STRIP	TEFLON
13	1	GTP-9363-S	PISTON SPRING	S/S
14	1	GTP-9363-STA	STRAINER ASSEMBLY	S/S
15	1	GTP-9363-15	TRIGGER PIVOT BASE	STEEL
16	1	GTP-9363-16	TRIGGER	STEEL
17	1	GTP-2200-222	O-RING	VITON GLT
18	1	GTP-9363-19	STEM / POPPET ASSEMBLY	
19	1	GTP-9363-17	ROUND SPOUT ASSEMBLY - 1 1/2 INCH	ALUM
20	1	SFN/1.5-A	SPOUT DUST CAP	
21	1	GTP-3811-1	GROUNDING CABLE ASSEMBLY	
22	1		COTTER PIN - 1/16 DIA x 3/4 LONG	S/S
23	2	GTP-2200-135	O-RING	VITON GLT
24	2	GTP-2200-138	O-RING	VITON GLT
25	2		PHIL. PAN HEAD MACHINE SCREW - #10-32 x 3/8 LG	18-8 S/S
26	16		HEX HEAD MACHINE SCREW - #12-24 x 3/4 LG	18-8 S/S
27	8		SOCKET HEAD CAP SCREW - #10-32 x 1/2 LG	18-8 S/S
28	2	GTP-9363-T2	TRIGGER FASTENER BARREL	S/S
29	2	GTP-9363-T4	TRIGGER FASTENER TRUSS HEAD SCREW	S/S
30	2	GTP-9363-35B	BUSHING < PART OF ITEM 1 >	BRASS
31	1	GTP-2200-110	O-RING < PART OF ITEM 1 >	VITON GLT
32	1	GTP-1506-1	SLEEVE, BALL RELEASE < PART OF ITEM 5 >	ALUM
33	1	GTP-1506-10	RETAINING RING	S/S
34	4	GTP-1506-8	BALLS	S/S
35	1	GTP-1506-9	SPRING	S/S
36	1	GTP-9363-5A	OUTLET FLANGE	ALUM
37	2	GTP-9363-35C	PLUG < PART OF ITEM 1 >	ALUM
38	SEC 3811	GTP-1093	CABLE < PART OF ITEM 21 >	S/S
39	1	GTP-1097S	PLUG	S/S
40	1	GTP-5890C	GROUNDING CLIP	
41	1	GTP-3813	TERMINAL RING	S/S
42	1	GTP-9614	GAMMON LOGO STICKER	
43	1	GTP-9363-D5	STEM < PART OF ITEM 18 >	S/S
44	1	GTP-9363-D1	POPPET	ALUM
45	1	GTP-9363-2D	STEM SEAL	VITON GLT
46	1	GTP-9372-5VG	O-RING	VITON GLT
47	1	GTP-9372-6	GROOVED PIN	S/S
48	1	GTP-9363-36A	PISTON BODY < PART OF ITEM 2 >	ALUM
49	1	GTP-9363-36B	PISTON HEAD	ALUM
50	1	GTP-9363-2C	PISTON SEAL	VITON GLT
51	1	GTP-9363-61	PISTON O-RING	TEFLON
52	1	GTP-2200-007	O-RING < PART OF ITEM 10 >	VITON GLT
53	1	GTP-9363-35	PISTON GUIDE < PART OF ITEM 1 >	ALUM
54	2	GTP-9363-60	SWIVEL BUSHING	PTFE
55				
56	1	GTP-9363-30	SLEEVE RELEASE BARREL	ALUM
57	1		SHOULDER SCREW	18-8 S/S
58	1	GTP-9363-30S	SLEEVE RELEASE SPRING	S/S
59	1	GTP-3477	ACTUATOR RING	S/S
60	1	GTP-9363-9R	HANDLE / GUARD - RED	
61	1	GTP-9363-45	SEAL GUIDE	ALUM
62	1	GTP-9363-88	FLAT WASHER	PTFE
63	1	GTP-9363-80	FLAT WASHER	18-8 S/S
64	1	GTP-9363-91	CLEVIS PIN	
65	1	GTP-9363-87	COTTER PIN	

GAMMON TECHNICAL PRODUCTS, INC

2300 HWY. 34

MANASQUAN, NEW JERSEY - U.S.A.

08736

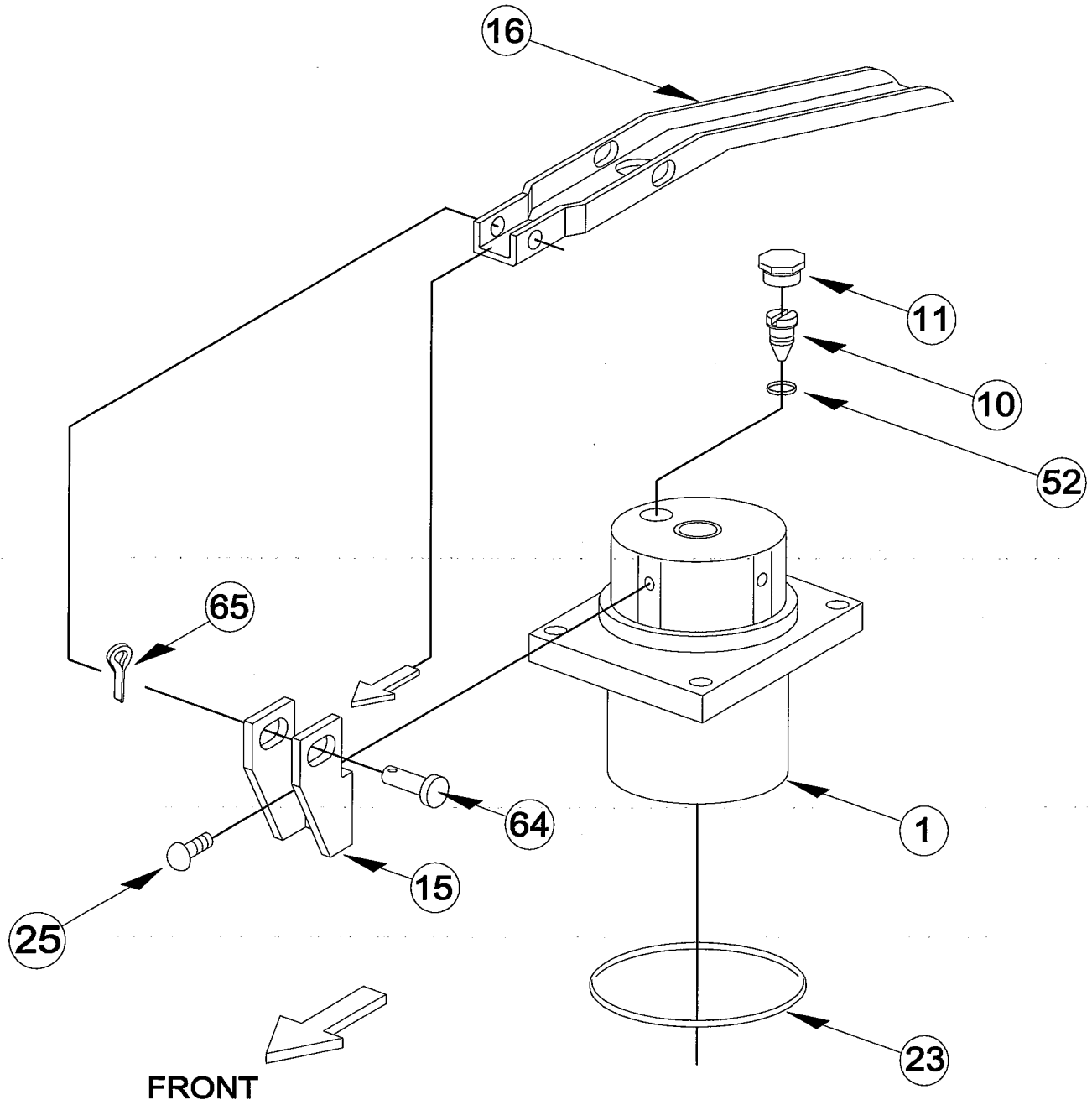


FIGURE 1

GAMMON TECHNICAL PRODUCTS, INC

2300 HWY. 34

MANASQUAN, NEW JERSEY - U.S.A.

08736

PISTON ASSEMBLY
ITEM 2

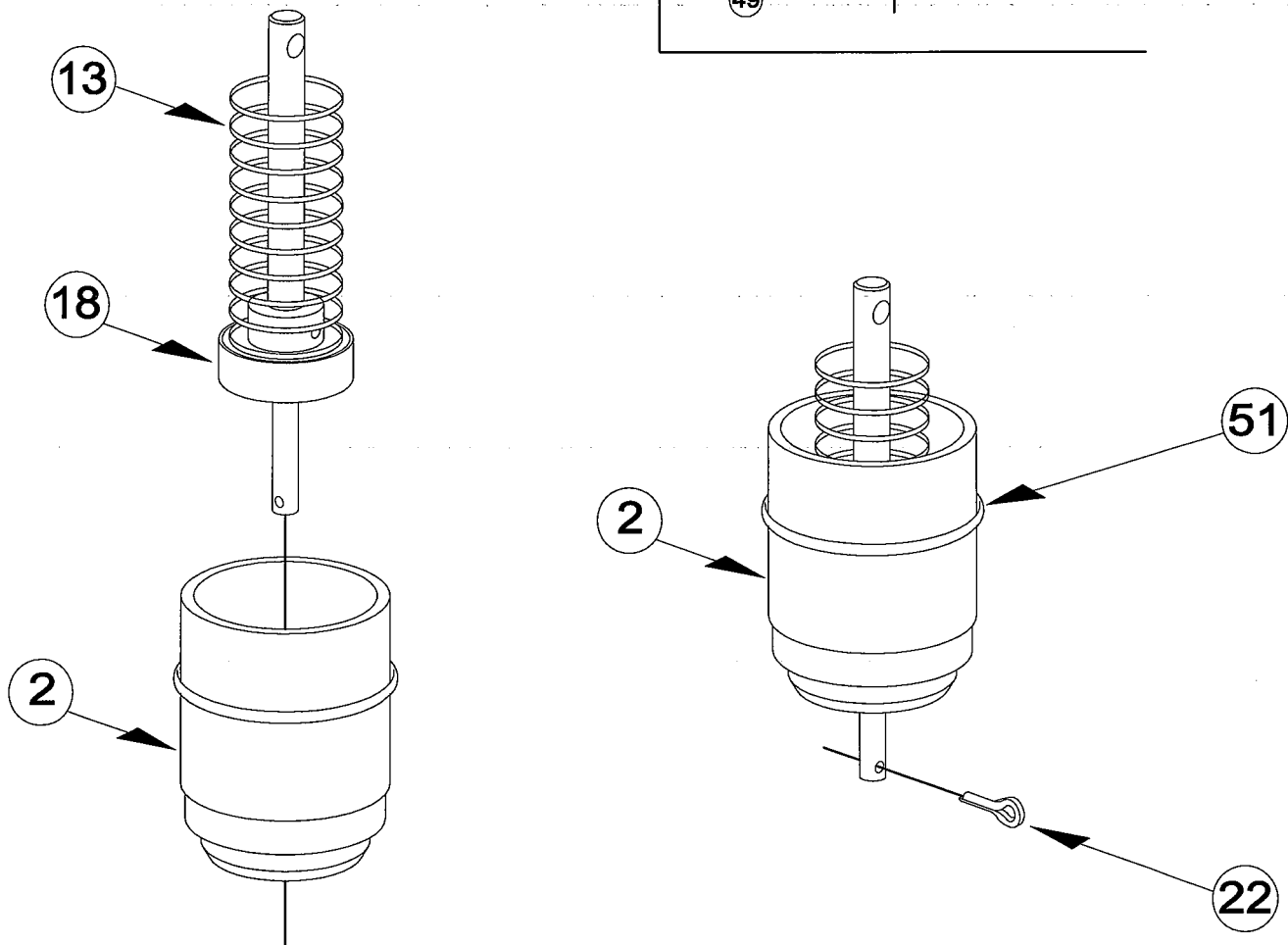
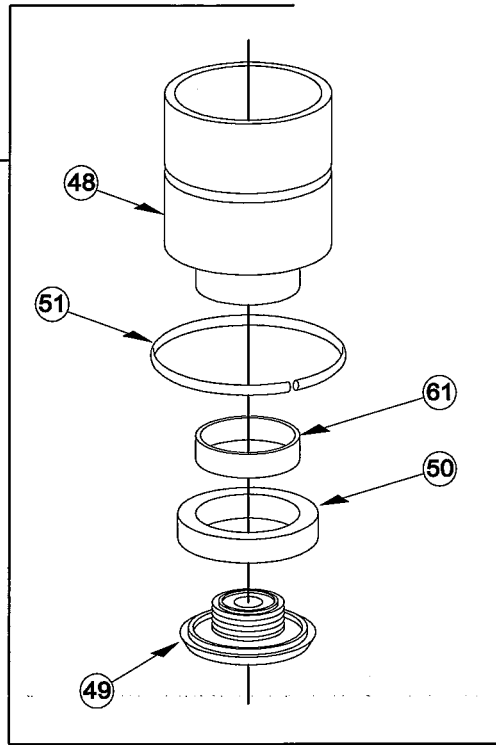


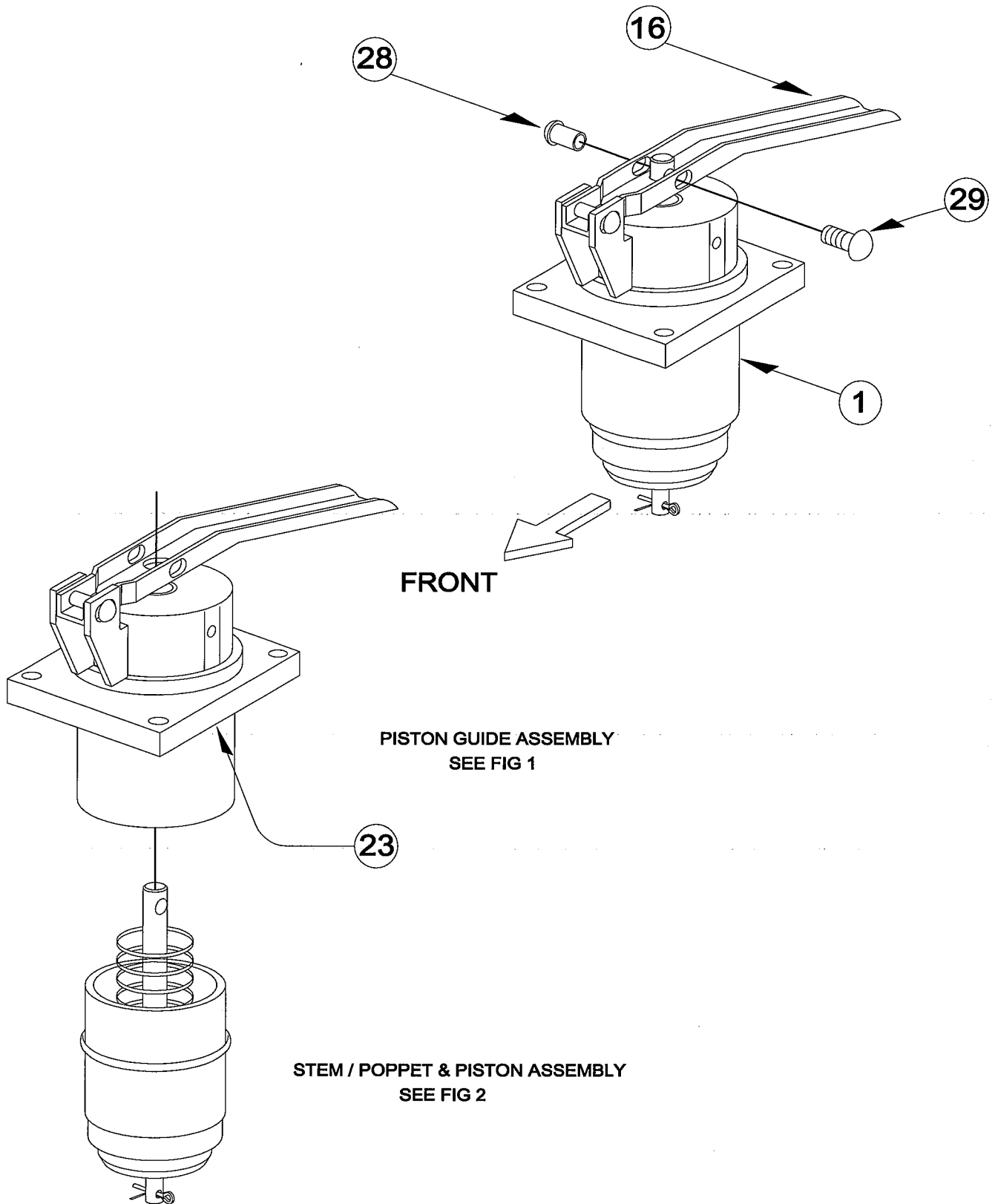
FIGURE 2

GAMMON TECHNICAL PRODUCTS, INC

2300 HWY. 34

MANASQUAN, NEW JERSEY - U.S.A.

08736



FRONT

PISTON GUIDE ASSEMBLY
SEE FIG 1

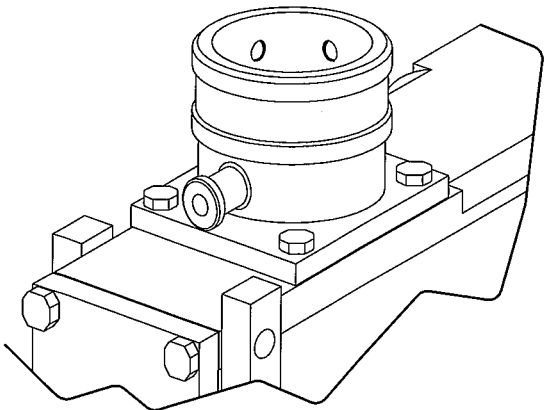
23

STEM / POPPET & PISTON ASSEMBLY
SEE FIG 2

FIGURE 3

GAMMON, TECHNICAL PRODUCTS, INC

2300 HWY. 34
MANASQUAN, NEW JERSEY - U.S.A.
08736



NOZZLE - PARTIAL BOTTOM VIEW

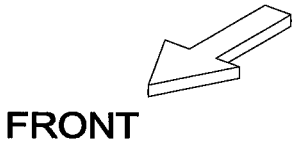
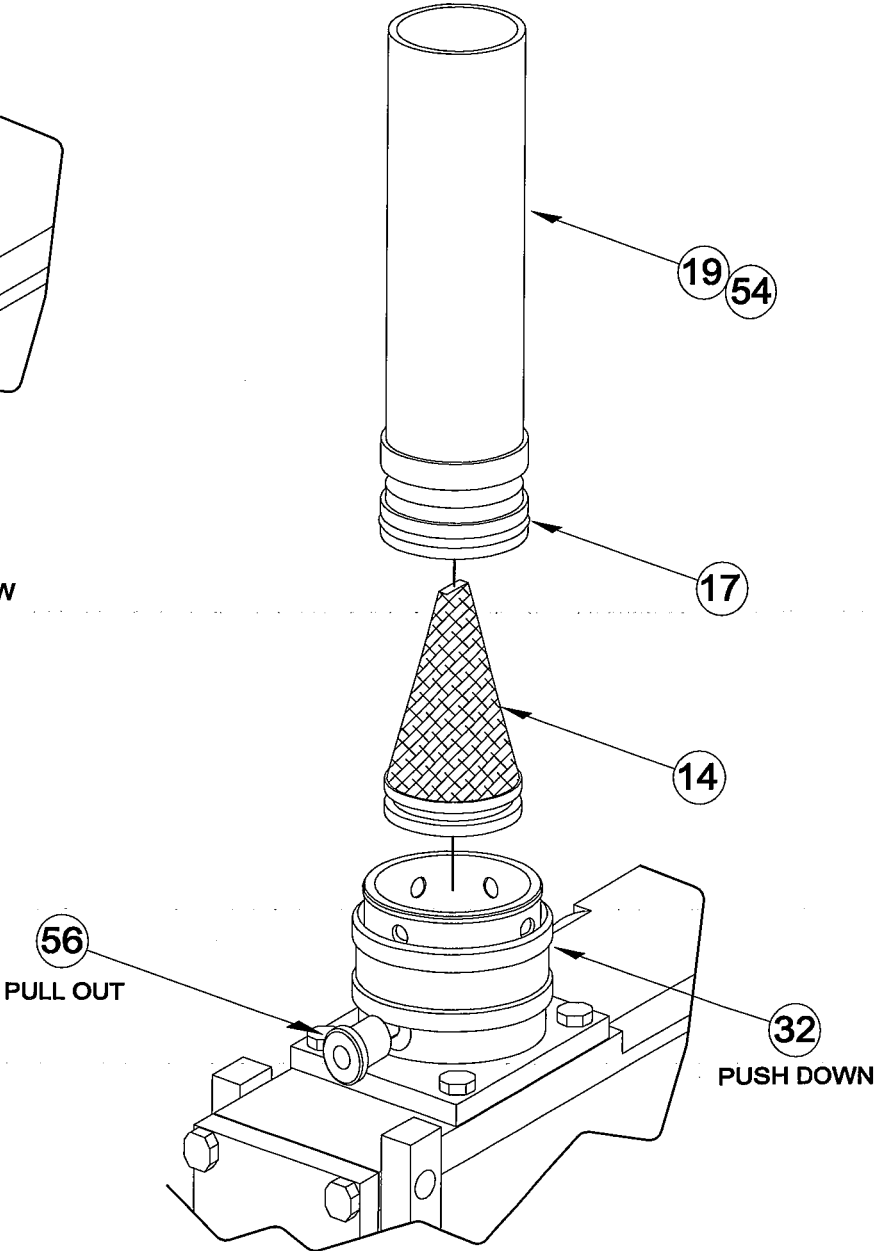


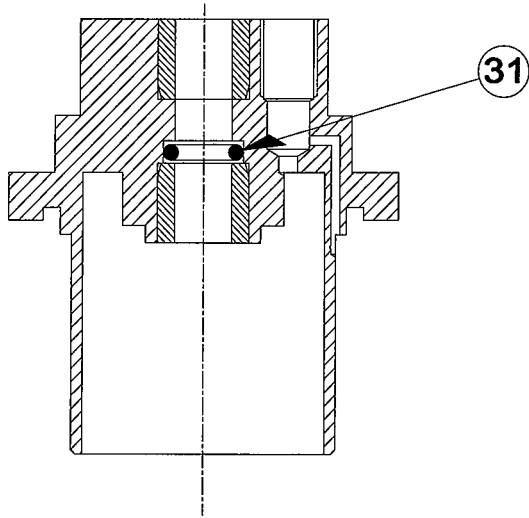
FIGURE 4

GAMMON TECHNICAL PRODUCTS, INC

2300 HWY. 34

MANASQUAN, NEW JERSEY - U.S.A.

08736



PISTON GUIDE SECTIONAL VIEW

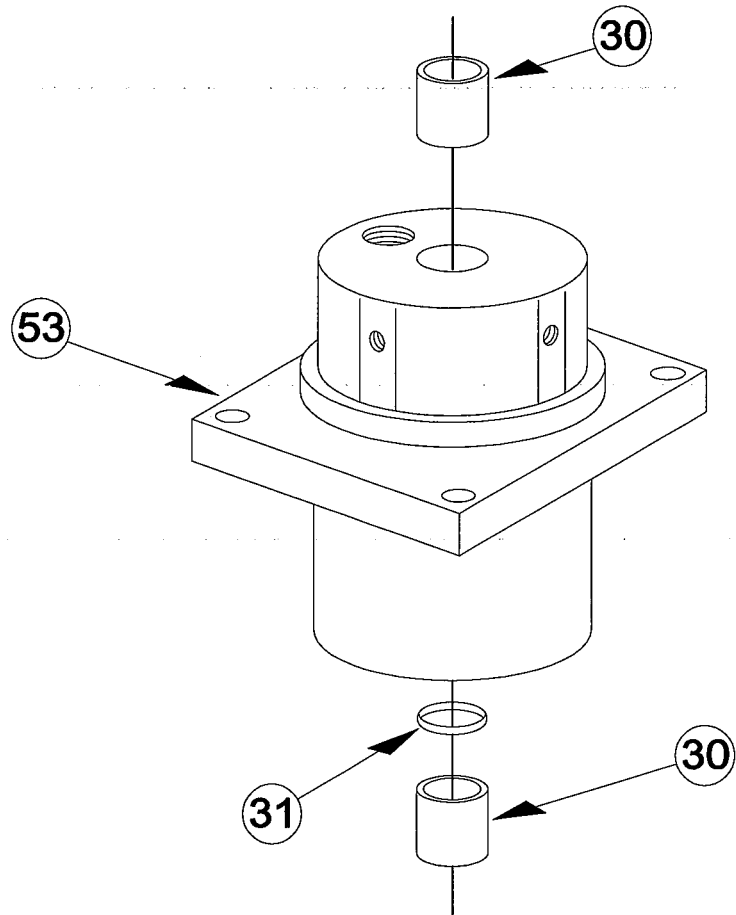
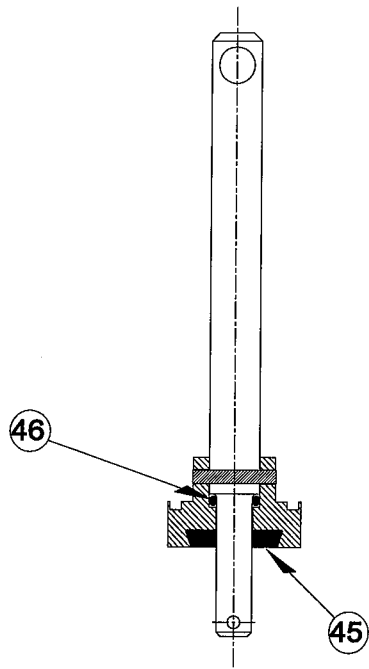


FIGURE 5

GAMMON TECHNICAL PRODUCTS, INC
2300 HWY. 34
MANASQUAN, NEW JERSEY - U.S.A.
08736



POPPET SECTIONAL VIEW

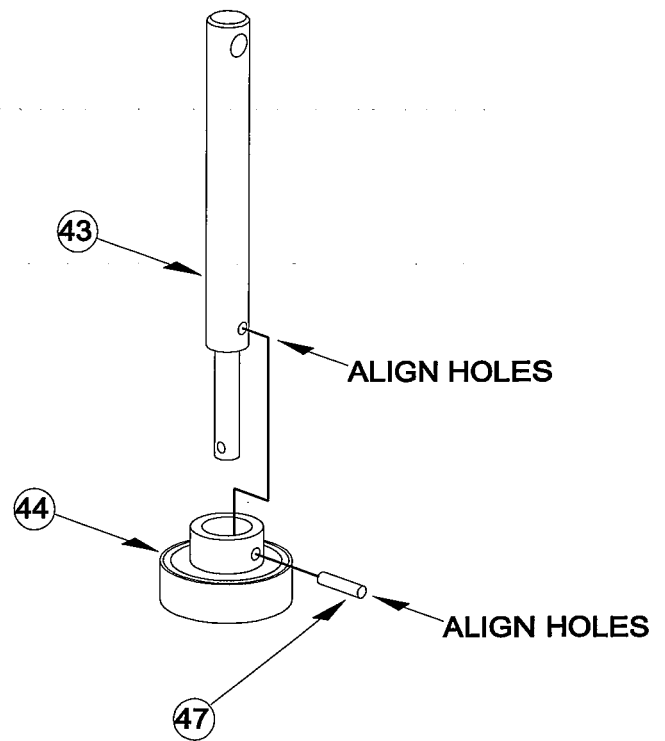
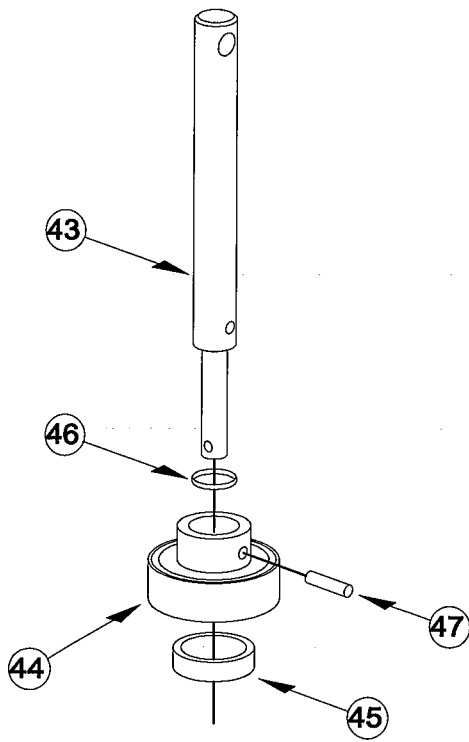
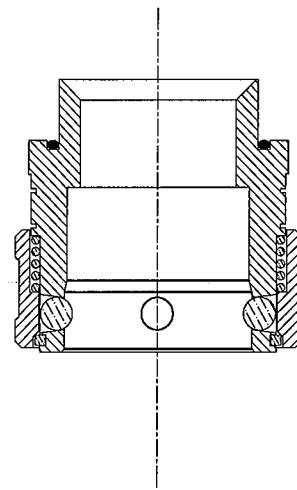
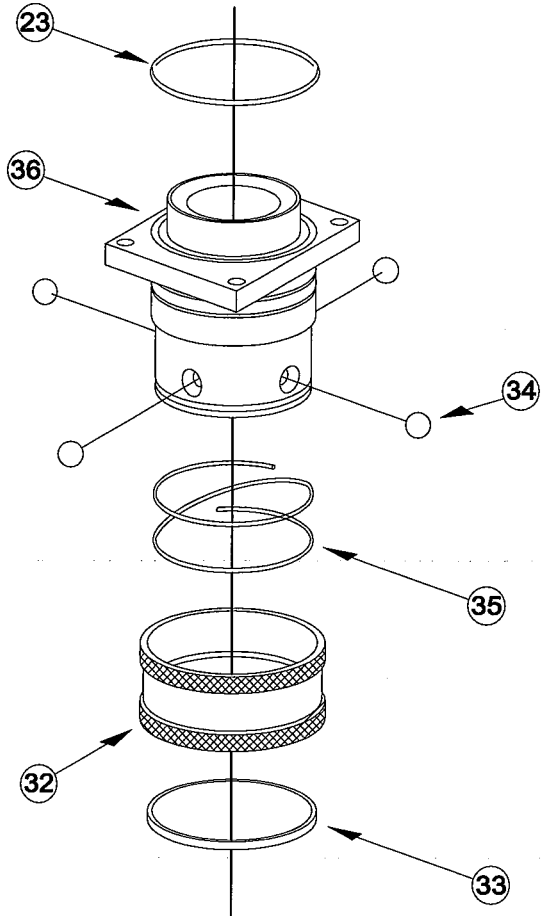


FIGURE 6

GAMMON TECHNICAL PRODUCTS, INC

2300 HWY. 34
MANASQUAN, NEW JERSEY - U.S.A.
08736



QUICK DISCONNECT OUTLET ASSEMBLY
ITEM 5

FIGURE 7

PISTON ASSEMBLY

ITEM 2

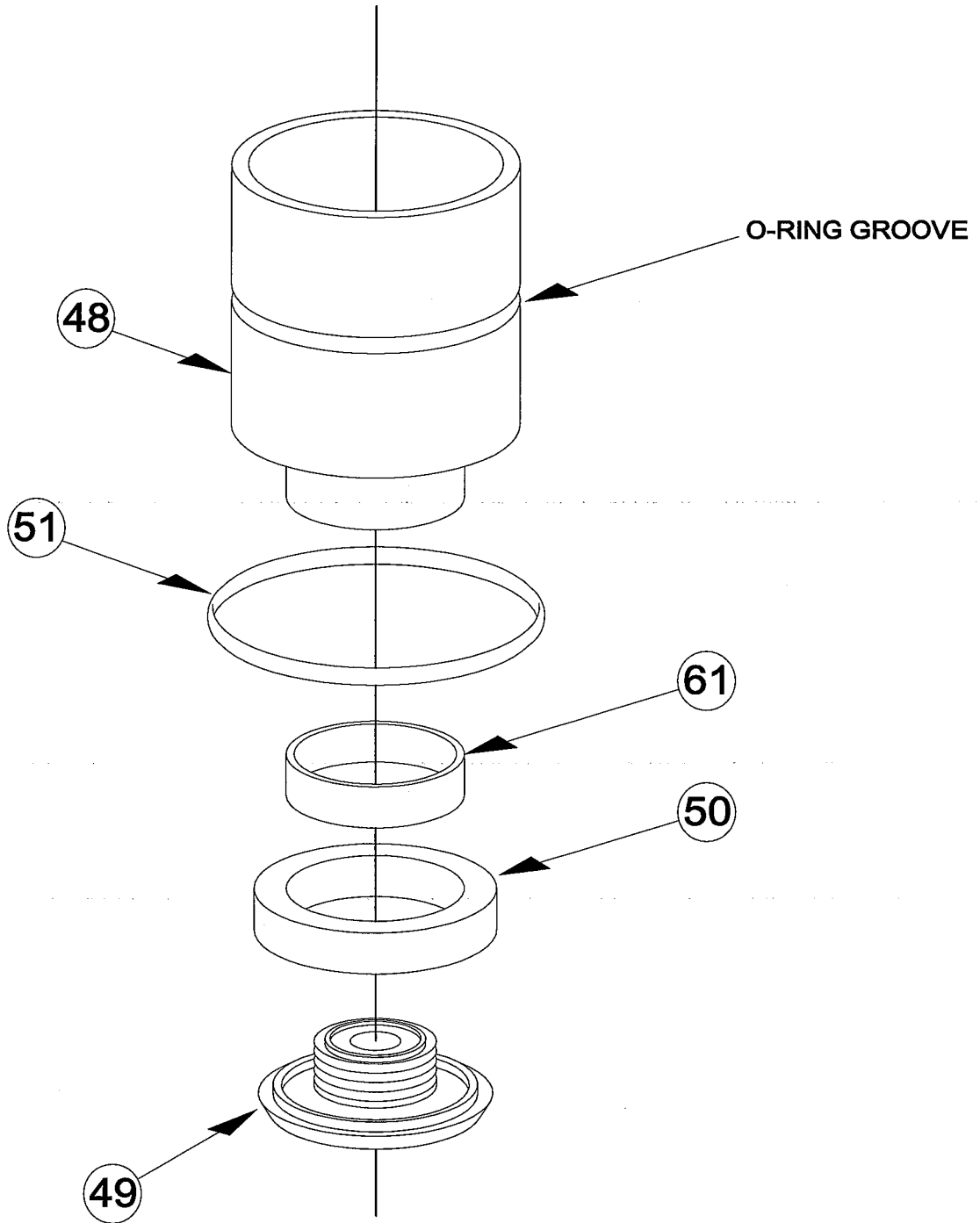


FIGURE 8

GAMMON TECHNICAL PRODUCTS, INC

2300 HWY. 34
MANASQUAN, NEW JERSEY - U.S.A.
08736

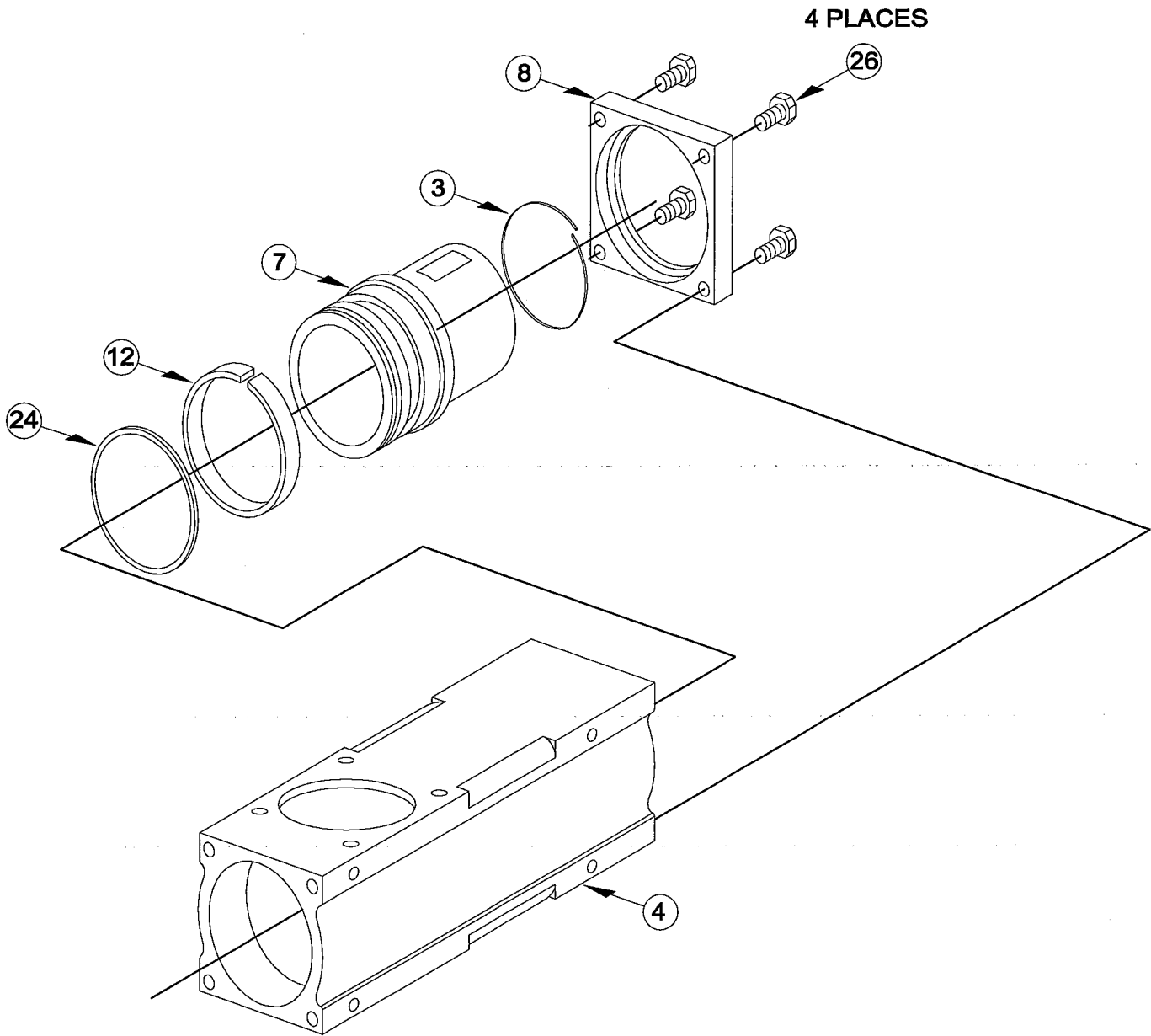


FIGURE 9