



GAMMON TECHNICAL PRODUCTS, INC.
P.O. BOX 400 - 2300 HWY 34
MANASQUAN, N.J. 08736

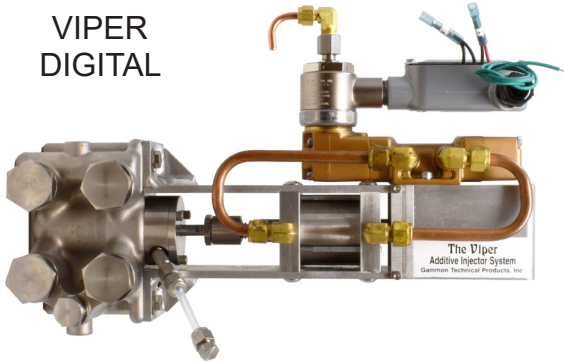
PHONE 732-223-4600
FAX 732-223-5778
WEBSITE www.gammontech.com
STORE www.gammontechstore.com

**VIPER
ADDITIVE
INJECTION
SYSTEMS**

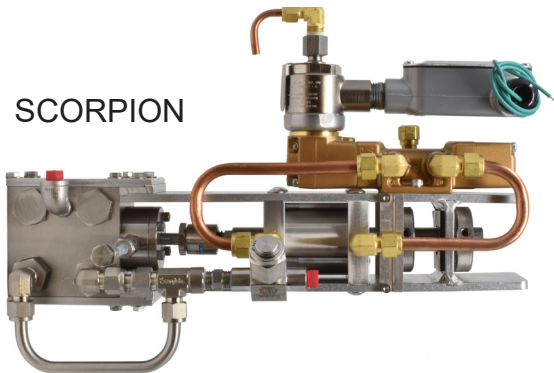
**BULLETIN 36
(11-20)**

VIPER PUMPS

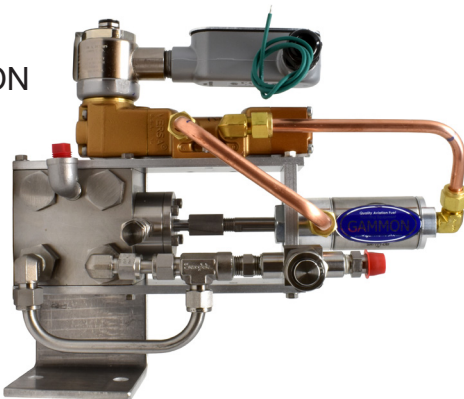
VIPER
DIGITAL



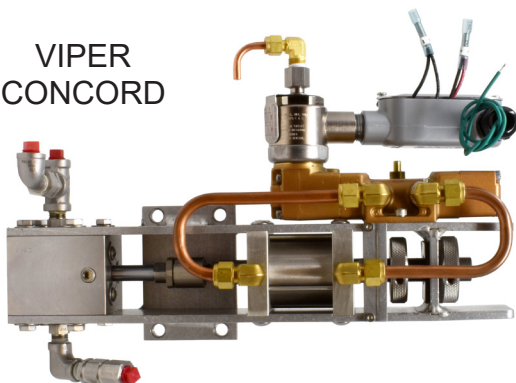
SCORPION



SCORPION
MINI



VIPER
CONCORD



VIPER ADDITIVE INJECTORS

FOR MOST ANY ADDITIVE IN ANY FUEL

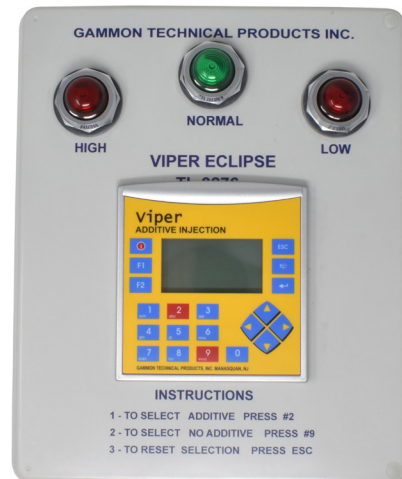
Viper Additive Injectors are designed to accurately and reliably inject a wide range of additives into a flowing stream of fuel or other hydro-carbon liquid. All fluid-wetted components are 300 series stainless steel. For maximum accuracy, temperature range, and durability, we have a wide range of custom rubber seals available.

Available with or without controls, these injectors can be directly controlled by the new advanced LC, TCS, and other meter computers for simplicity and record keeping. Made in USA.

VIPER CONTROLS

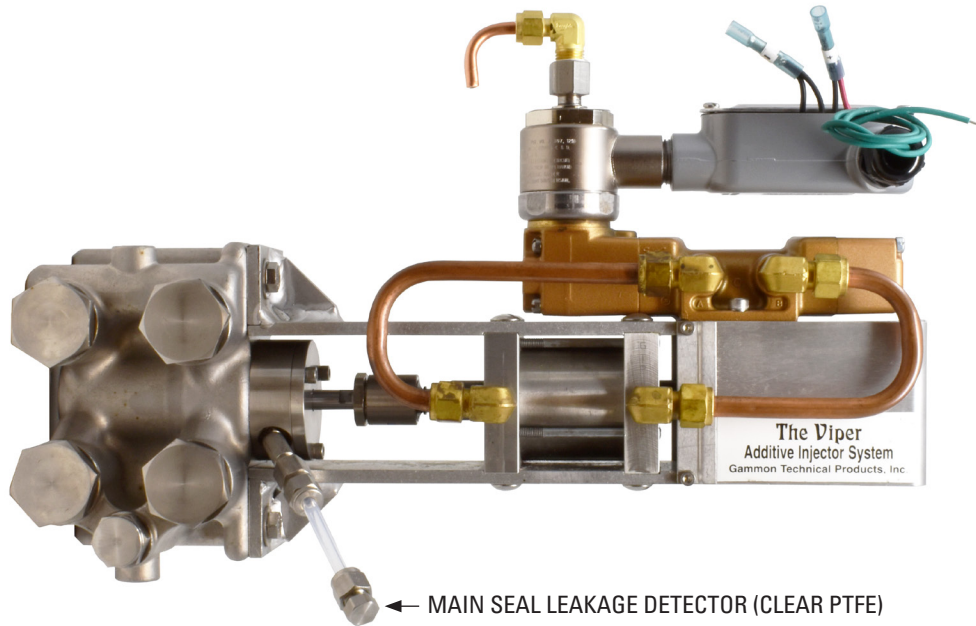


VIPER
DIGITAL
CONTROL



VIPER ECLIPSE
CONTROL & METER

VIPER PUMP



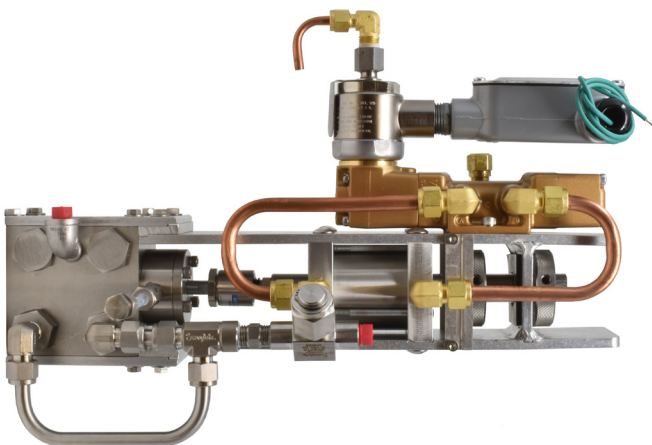
The Viper pump is a simple concept. A double-acting, positive displacement, solid stainless steel piston pump, tested to provide a long life on clean additive before seal change of 30,000,000 gallons. All rubber (check valve) and PTFE (shaft and piston) seals, for reliability and accuracy. Self-cleaning check valve design, inlet strainer and main seal leakage detector. Compressed air powered, electronically controlled.

Our Heavy Duty mechanical adjuster is linear so if you change the adjuster 10%, the additive output changes 10%, unlike some competitors. Tested to -50° F. Viper pumps in service as long as 15 years have never needed adjustment, just occasionally new seals or a strainer cleaning. Checking is simple, flow volume into a test jar is the same as flow into the fuel stream.

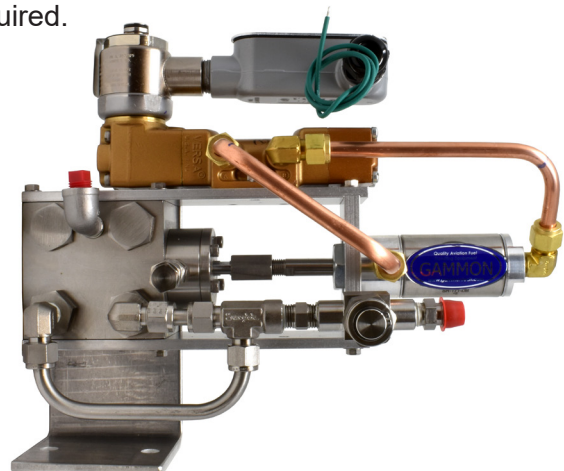
Flow rates up to 1,200 gpm, additive rates up to 1,500 ppm. Includes a special test valve, high-visibility flow indicator, and atomizing injector nozzle.

VIPER SCORPION & SCORPION MINI

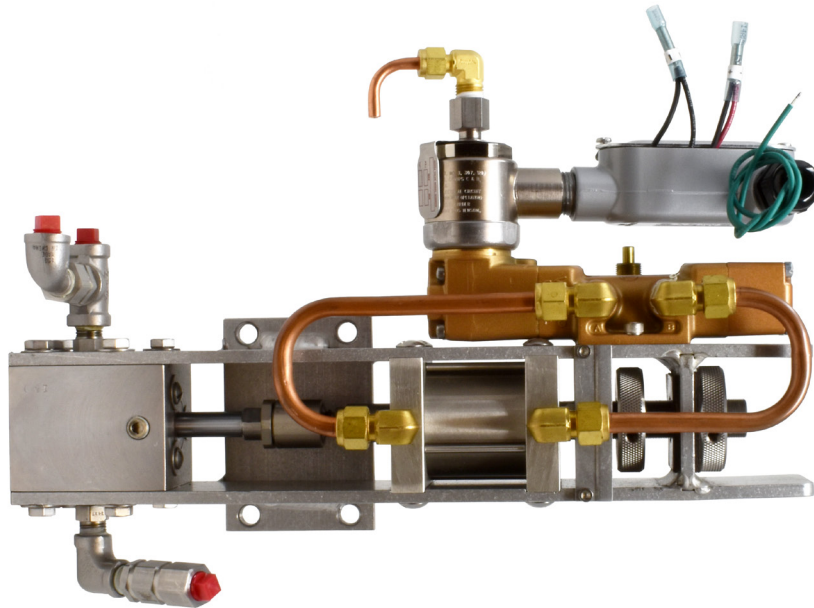
The Viper Scorpion is a smaller version of the Viper. Flow rates up to 500 gpm at 100 to 1,000 ppm. Compact and less expensive, but just as accurate and reliable.



The Viper Scorpion Mini is a simplified additive injection system without mechanical adjustment. Developed for use specifically with a meter computer such as the TCS or LC system. Additive meter required.



VIPER CONCORD

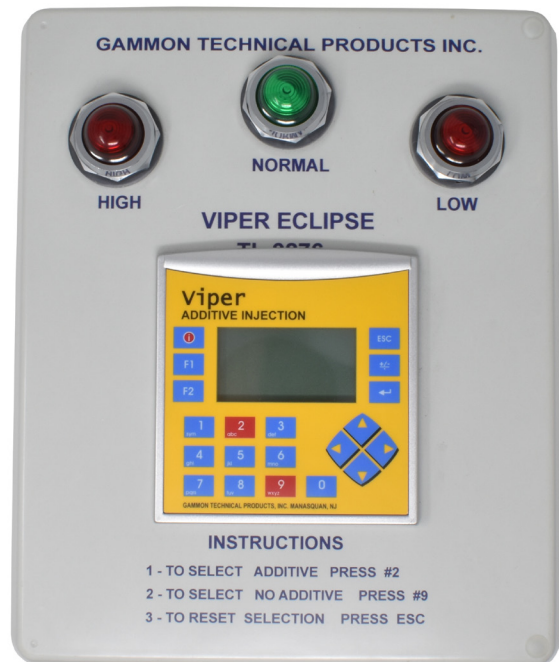


The Viper Concord was developed long ago to inject CI/LI additive for the Concord SST. Designed to accurately inject additive at as low as 20 ppm at flow rates up to 1,000 gpm, the Concord was “brought out of retirement” to join the Viper line. Interestingly, the Concord has no Piston seal, utilizing a clean “return” design to prevent leakage.

DIGITAL VIPER AND VIPER ECLIPSE CONTROL SYSTEM

The “brain” is a simple control, preset before shipment. No programming needed! The Digital Viper takes a pulse from your existing meter, and paces the additive flow rate to match the fuel flow. When interfaced with an on-board meter computer, can inject additive at different ratios for different customers, simply! A very simple system, using robust parts specifically built for this purpose.

The Viper Eclipse builds on the Digital Viper. It has a more advanced brain and a digital display. But don't worry about programming, we do it all, no field programming needed. It has self-checking and self-adjusting ability, as well as a digital display with ppm, percent, gallons (or liters) of fuel and gallons (or liters) of additive displayed. It has warning and shutdown modes if additive concentration falls out of the set range. Includes additive meter calibration and priming modes. The Eclipse adds an additive meter and an intelligent “permissive” control system. The operator cannot dispense fuel without first telling the Viper Eclipse to inject, or not to inject additive. No more “forgetting” to turn the injector on or off. Maintaining a 1,000 operation memory of additive and fuel dispensed, date and time.



The Viper Eclipse Control System can be used with any of the Viper pumps.

HOW TO ORDER VIPERS

DIGITAL: GTP - 9076 -
SCORPION: GTP - 9776 -
SCORPION MINI: GTP - 9777 -
SCORPION ECLIPSE: TL - 9976 -
ECLIPSE: TL - 9276 -

D - Basic
P - Assembled with 10 gallon tank
C - Assembled with 5 gallon pail holder
G - Panel mounted
R - Pump only (Scorpion)

ADDITIVE TYPE

N - DiEGME
F - Betz +100
Q - Stadis 450/corrosion inhibitor

TANK OPTIONS FOR 9076D, & 9076G

1 - 10 gallon stainless steel tank
2 - 5 gallon pail holder and
5 gallon pail suction tube
BLANK - No tank

PULSES PER GALLON

1 - One pulse per gallon
10 - Ten pulses per gallon
100 - One hundred pulses per gallon

VOLTAGE

R - 12 VDC
S - 24 VDC
T - 120 VAC
U - 240 VAC

NOTE: Power from pulse transmitter must be DC.

3 - 1/4" injector for 3" pipe or larger
BLANK - 1/4" injector for pipe less than 3"

NOTE: Not all combinations are possible.

TO ORDER THE CONCORD:

Order the GTP-9076, with additive type Q (Stadis 450/corrosion inhibitor). Fill out all other boxes on the chart above as necessary for your application.

ACCESSORIES TO BE ORDERED SEPARATELY

GTP-3355	55 gallon drum level indicator
GTP-3355-10	55 gallon drum rack
GTP-5504	55 gallon drum suction tube
GTP-3895	55 gallon drum vent assembly
GTP-8876-6BC	5 gallon suction assembly
GTP-8776-9	5 gallon pail - empty
GTP-8776-8	Pail holder
GTP-8807	Injector (quill)
GTP-9568	Electronic flow meter (no display)
GTP-2305-2-070	3-way ball valve
GTP-9651	Air regulator/lubricator

NOTE: 55 gallon drums must be horizontal for best operation.